

Lukida 4000

DATA SHEET

An aesthetic solar light column with an award-winning design, ideal for outdoor lighting applications, where design matters, such as gardens, parks, boulevards.

Light source	6 high-efficiency LEDs
Solar Operating Power (SOP)	up to 20 Watt
Max. luminous flux @ SOP	up to 3,050 lm
Luminaire efficacy	up to 153 lm/W
System Power Ratio (SPR)	up to 10
Autonomy	at least 3 nights (36h)
Pole height	4.0 / 5.0 / 6.0 / 8.0 m

STANDARDS AND COMPLIANCES

ISO	ISO 9001-2015
Illumination	According to EN 13201, IESNA RP-8-00
Light pole	EN 40
IP Rating (Luminaire)	IP66
Power tube	
impact protection rating	IK06
Photovoltaics	EN 61215 (adapted)
CE	✓
RoHS	✓

GLOBAL WARMING MITIGATION - ENERGY AND CO² SAVINGS

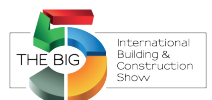
Electrical energy and CO² emission savings of one solar light pole in 30 years compared to:

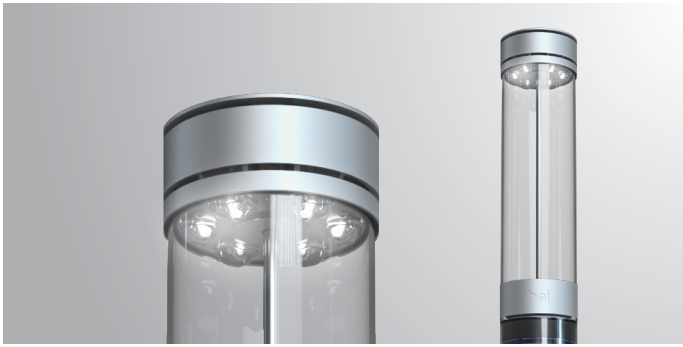
Standard cabled LED	3,700 kWh/1.9 tons CO²
HPS light (100W)	13,100 kWh/6.6 tons CO²
Specific CO ² emissions:	0.5 kg CO² per kWh

Product innovation award @

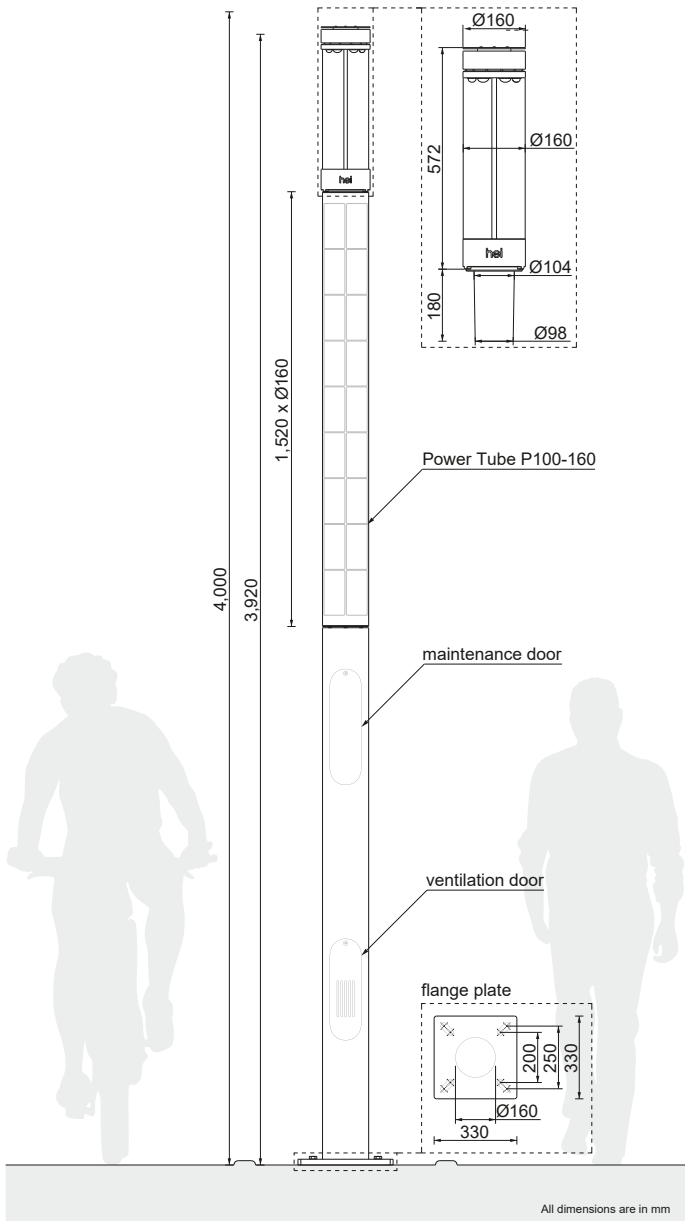


URBAN DESIGN & LANDSCAPING EXPO





Lukida 4000



LUMINAIRE

Solar Operating Power (SOP)	up to 20 Watt
Max. luminous flux @ SOP	up to 3,050 lm
Luminaire efficacy	up to 153 lm/W
Correlated Colour Temperature (CCT)	4,000 K (white) 3,000 K (warm white) - optional 2,700 K - optional
Colour rendering index (CRI)	≥ 70 (optional >=80)
Life time of LEDs (L70/B10)	> 90,000 hours
Material (housing)	Aluminium
Finishing (housing)	RAL 9006 other colors optional

Weight 8 kg

Pole

Wind class acc. EN 40	45 m/s
Pole height	4.0/5.0/6.0 / 8.0 m
Light spot height	3.92/4.92/5.92 / 6.92 / 7.92 m
Pole diameter	160 mm
Pole weight (P100/160)	58 / 74 / 90 / NA kg
Pole weight (P200/160)	NA / 62 / 78 / 110 kg
Foundation	Flange plate Sleeve foundation - optional
Material	Steel
Finishing	RAL 9006 or special finish

Corrosion class C4
Other pole heights optional.

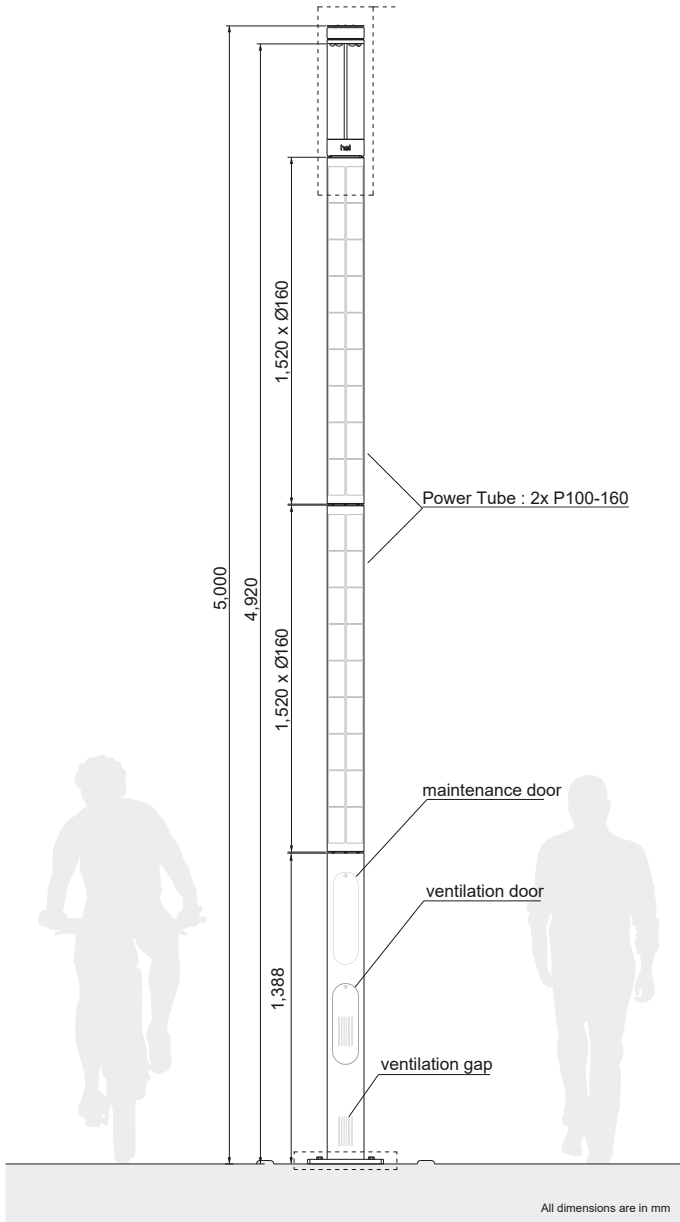
POWER CONTROL

Programmable microcontroller	✓
Controller location	Pole
Dynamic light profile	Customer-specific
Motion detector	optional
Hybrid power supply (AC back-up)	Optionally

BATTERY

Technology	VRLA, cycle type	LiFePo4
Location	inside pole	inside pole
Capacity (up to)	5x13 Ah / 12 V	5x12 Ah / 12 V
Dimensions [mm]	5x L151 x W98 x H95	5x L151 x W98 x H95
Temperature range	-20°C to 45°C	-20°C to 50°C
Weight	21 kg	10 kg

Power Tube P200-160



POWER TUBE P100-160

No. Of Power Tubes	1
Technology	Silicon solar cells
Number of solar cells (array)	27 pcs (3 strings x 9 pcs / string)
Nominal power of solar cells	134 W _p
Dimensions [mm]	L1,520 x Ø160 mm
Weight	7 kg

POWER TUBE P200-160

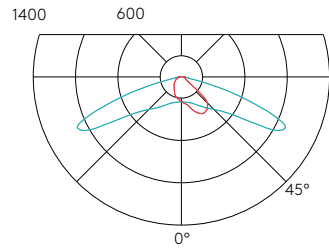
No. Of Power Tubes	2
Technology	Silicon solar cells
Number of solar cells (array)	2 x 27 pcs (6 strings x 9 pcs / string)
Nominal power of solar cells	2 x 134 W _p
Dimensions [mm]	L3,040 x Ø160 mm
Weight	2 x 7 kg

SYSTEM

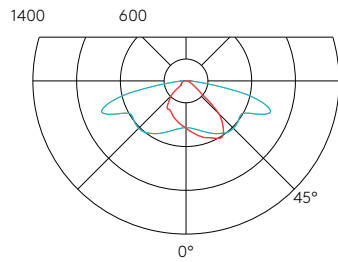
Power Tube	P100-160	P200-160
System Power Ratio (SPR)	5	10
Autonomy	at least 3 nights (36h)	
Total weight :		
4m	77 kg	NA
5m	93 kg	88 kg
6m	109 kg	104 kg
8m	NA	137 kg

PHOTOMETRIC DATA

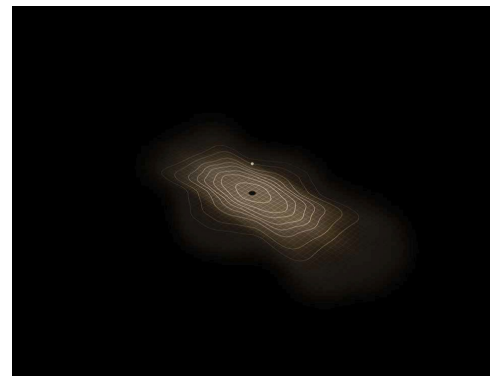
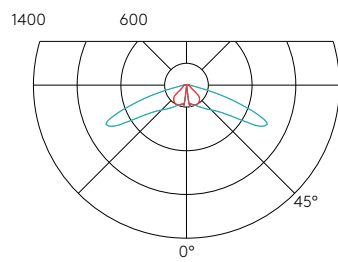
asymm. street



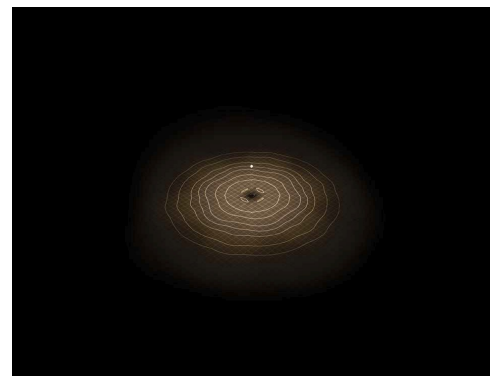
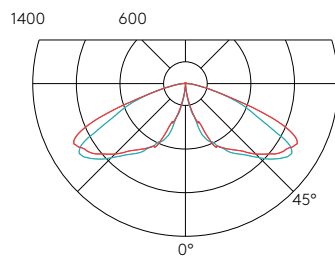
asymm. street with pathway



symm. long



symm.



PHOTOMETRISCHE DATEN

asymm. bike path

