

Project report download ▾

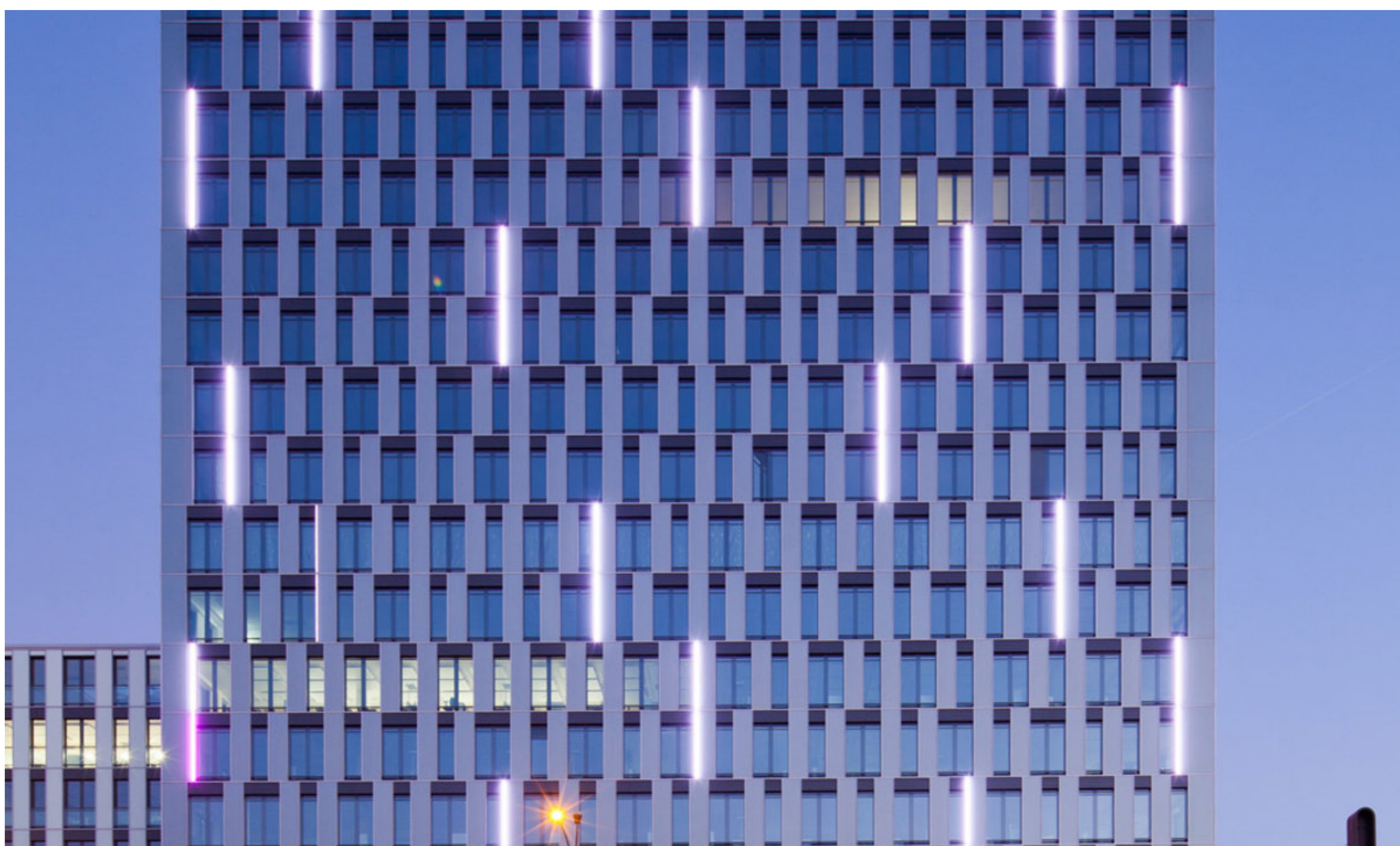


Königsstadt Carrée
Berlin, Germany

The Königsstadt Carrée is an office and hotel complex in the Berlin-Mitte district. The new construction comprises four building sections: a 21-storey office tower block, a 9-storey connecting building and an atrium and hotel. In accordance with the architectural concept, the facade of the tower block is accentuated using LED lighting. For this, around 100 Selux RGB luminaires have been integrated directly into the façade, with the luminaires for this special project controlled via Selux Netcomposer.

project
client
architect
electrical installation
photographer

Königsstadt Carrée
bauart Beteiligungs- GmbH&Co
STP Architekten
Lischke & Co GmbH
Piotr Krajewski



Individual luminaires are activated via DMX wires, which are routed in the false floor of the relevant storey, where the power supply and the LED converters are likewise accommodated. The equipment room, which houses all the control units, is located on the 21st storey. A particular feature of the facade is that various animations can be summoned up via the Selux media server for lighting purposes.